

0 8 3 1 U 5
L083TUS-03 SKU0831

Collagen Beauty Booster nourishes the skin from within and provides the nutrients to maintain youthful and radiant skin. It is formulated with Verisol® Collagen which has been tested to show support of skin elasticity and the reduction of fine wrinkles. It is also formulated with Vitamins A (as beta-carotene), C and E. Vitamins C and E help prevent free radical cell damage that ages your skin. This formula supports strong nails and healthy hair with Selenium, Zinc, and Biotin.* Mix with water or add to your shake, tea or aloe.

DIRECTIONS: Shake the canister prior to use as contents may settle. Mix 1 scoop (approximately 6g) in 8 fl oz of water. Take 1 serving per day.

STORE IN A COOL, DRY PLACE WITH LID TIGHTLY CLOSED.

30-day money-back guarantee. This exclusively formulated product is only available through Herbalife Independent Distributors.

Verisol® is a registered trademark of Gelita AG.

* These statements have not been evaluated by the Food and Drug Administration. This product is not intended to diagnose, treat, cure or prevent any disease.

HERBALIFE SKIN®

Collagen Beauty Booster

strawberry
lemonade

natural flavor with other natural flavors
no artificial sweeteners

Certified



Gluten-Free

DIETARY SUPPLEMENT

NET WT: 6.03 OZ (171g)



Supplement Facts

Serving Size: 1 scoop (approximately 6 g)

Servings Per Container: 30

Amount Per Serving			Amount Per Serving		
		% DV**			% DV**
Calories	20		Iodine (as Potassium Iodide)	45 mcg	30%
Total Carbohydrate	2 g	<1%	Zinc (as Zinc Gluconate)	4.5 mg	41%
Protein	2 g		Selenium (as Selenomethionine)	21 mcg	38%
Vitamin A (as Beta-Carotene)	75 mcg RAE	8%	Copper (as Copper Gluconate)	0.6 mg	67%
Vitamin C (as Calcium Ascorbate)	18 mg	20%	Sodium	15 mg	<1%
Vitamin E (as DL-Alpha Tocopheryl Acetate)	7.5 mg	50%	Collagen Hydrolysate	2.5 g	†
Niacin (as Niacinamide)	6 mg NE	38%			
Biotin	90 mcg	300%			

** Percent Daily Values (% DV) are based on a 2,000 calorie diet.

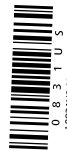
† Daily Value (DV) not established

OTHER INGREDIENTS: Maltodextrin, Citric Acid, Natural Strawberry Lemon Flavor, Stevia Leaf Extract, Microcrystalline Cellulose, and Calcium Phosphate.

2D
AREA

Formulated and distributed exclusively by:
HERBALIFE INTERNATIONAL OF AMERICA, INC.
800 W. Olympic Blvd., Suite 406,
Los Angeles, CA 90015, USA

Made in USA with US and imported ingredients ©2017 HERBALIFE

0 8 3 1 U 5
L083TUS-03 SKU0831