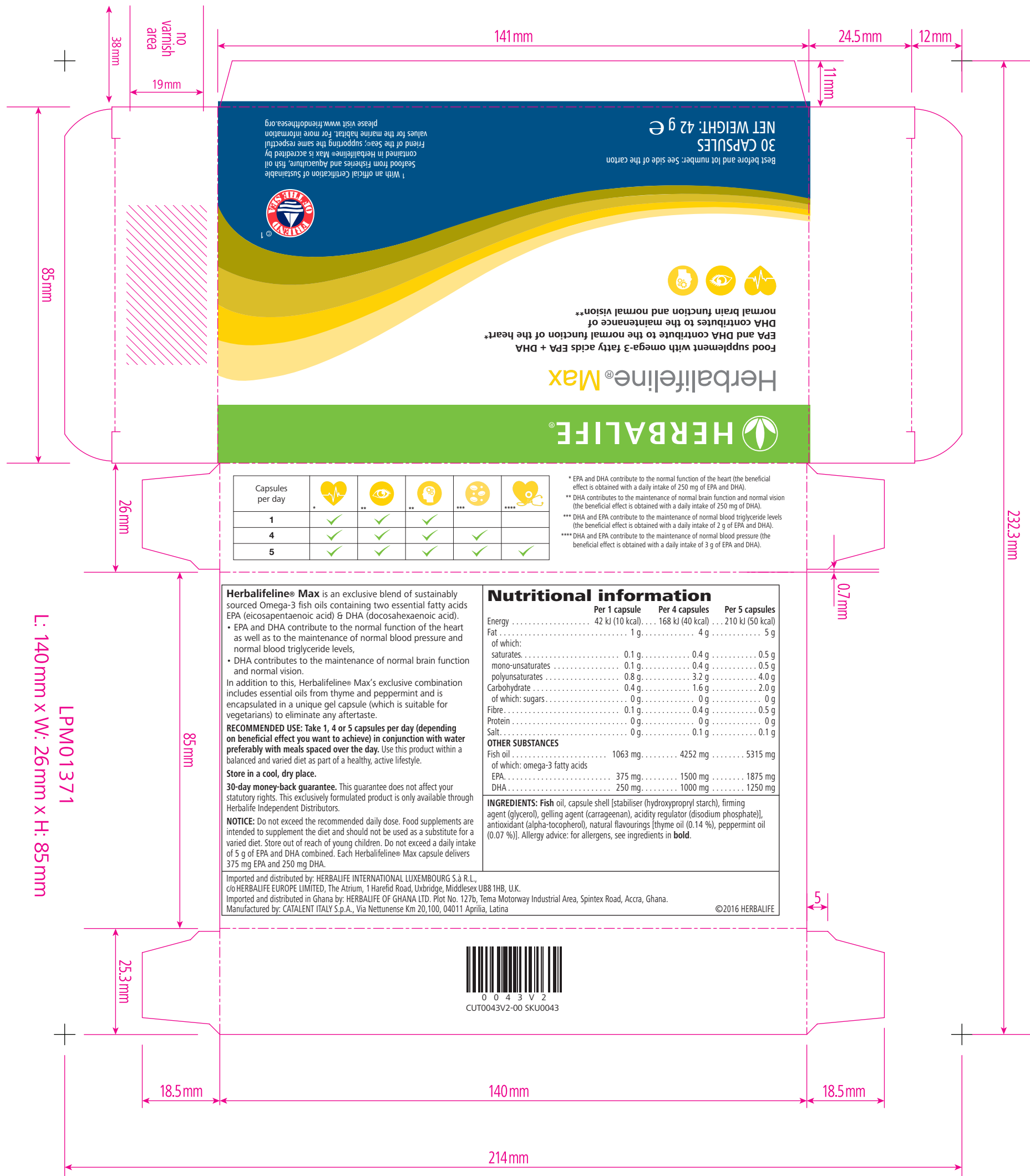


LATO STAMPA

L: 140mm x W: 26mm x H: 85mm

LPM01371



Best before and lot number: See side of the carton  
**30 CAPSULES**  
**NET WEIGHT: 42 g e**

With an official Certification of Sustainable Seafood from Fisheries and Aquaculture, fish oil contained in Herbalifeline Max is accredited by Friend of the Seas, supporting the same respectful values for the marine habitat. For more information please visit [www.friendofthesea.org](http://www.friendofthesea.org)

**HERBALIFELINE®**

**Herbalifeline® Max**

Food supplement with omega-3 fatty acids EPA + DHA

EPA and DHA contribute to the normal function of the heart\*  
 DHA contributes to the maintenance of normal brain function and normal vision\*\*

Capsules per day	Heart	Brain	Vision	Blood Pressure	Triglycerides
1	✓	✓	✓	✓	✓
4	✓	✓	✓	✓	✓
5	✓	✓	✓	✓	✓

\* EPA and DHA contribute to the normal function of the heart (the beneficial effect is obtained with a daily intake of 250 mg of EPA and DHA).  
 \*\* DHA contributes to the maintenance of normal brain function and normal vision (the beneficial effect is obtained with a daily intake of 250 mg of DHA).  
 \*\*\* DHA and EPA contribute to the maintenance of normal blood triglyceride levels (the beneficial effect is obtained with a daily intake of 2 g of EPA and DHA).  
 \*\*\*\* DHA and EPA contribute to the maintenance of normal blood pressure (the beneficial effect is obtained with a daily intake of 3 g of EPA and DHA).

**Herbalifeline® Max** is an exclusive blend of sustainably sourced Omega-3 fish oils containing two essential fatty acids EPA (eicosapentaenoic acid) & DHA (docosahexaenoic acid).

- EPA and DHA contribute to the normal function of the heart as well as to the maintenance of normal blood pressure and normal blood triglyceride levels.
- DHA contributes to the maintenance of normal brain function and normal vision.

In addition to this, Herbalifeline® Max's exclusive combination includes essential oils from thyme and peppermint and is encapsulated in a unique gel capsule (which is suitable for vegetarians) to eliminate any aftertaste.

**RECOMMENDED USE:** Take 1, 4 or 5 capsules per day (depending on beneficial effect you want to achieve) in conjunction with water preferably with meals spaced over the day. Use this product within a balanced and varied diet as part of a healthy, active lifestyle.

**Store in a cool, dry place.**

**30-day money-back guarantee.** This guarantee does not affect your statutory rights. This exclusively formulated product is only available through Herbalife Independent Distributors.

**NOTICE:** Do not exceed the recommended daily dose. Food supplements are intended to supplement the diet and should not be used as a substitute for a varied diet. Store out of reach of young children. Do not exceed a daily intake of 5 g of EPA and DHA combined. Each Herbalifeline® Max capsule delivers 375 mg EPA and 250 mg DHA.

Imported and distributed by: HERBALIFE INTERNATIONAL LUXEMBOURG S.à R.L., c/o HERBALIFE EUROPE LIMITED, The Atrium, 1 Harefid Road, Uxbridge, Middlesex UB8 1HB, U.K.  
 Imported and distributed in Ghana by: HERBALIFE OF GHANA LTD. Plot No. 127b, Tema Motorway Industrial Area, Spintex Road, Accra, Ghana.  
 Manufactured by: CATALENT ITALY S.p.A., Via Nettunense Km 20,100, 04011 Aprilia, Latina

**Nutritional information**

	Per 1 capsule	Per 4 capsules	Per 5 capsules
Energy	42 kJ (10 kcal)	168 kJ (40 kcal)	210 kJ (50 kcal)
Fat	1 g	4 g	5 g
of which:			
saturates	0.1 g	0.4 g	0.5 g
mono-unsaturates	0.1 g	0.4 g	0.5 g
polyunsaturates	0.8 g	3.2 g	4.0 g
Carbohydrate	0.4 g	1.6 g	2.0 g
of which: sugars	0 g	0 g	0 g
Fibre	0.1 g	0.4 g	0.5 g
Protein	0 g	0 g	0 g
Salt	0 g	0.1 g	0.1 g
<b>OTHER SUBSTANCES</b>			
Fish oil	1063 mg	4252 mg	5315 mg
of which: omega-3 fatty acids			
EPA	375 mg	1500 mg	1875 mg
DHA	250 mg	1000 mg	1250 mg
<b>INGREDIENTS:</b> Fish oil, capsule shell [stabiliser (hydroxypropyl starch), firming agent (glycerol), gelling agent (carrageenan), acidity regulator (disodium phosphate)], antioxidant (alpha-tocopherol), natural flavourings [thyme oil (0.14 %), peppermint oil (0.07 %)]. Allergy advice: for allergens, see ingredients in <b>bold</b> .			



**Legend**

- Folds
- Cuts
- ▨ No Copy/No Varnish